



# MONTHLY MEMBERSHIP PROGRESS REPORT

District 32 B

Results as of: 3/31/2017

GMT: HARVEY WHITLEY

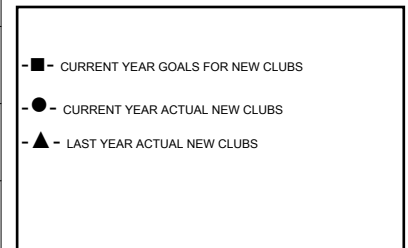
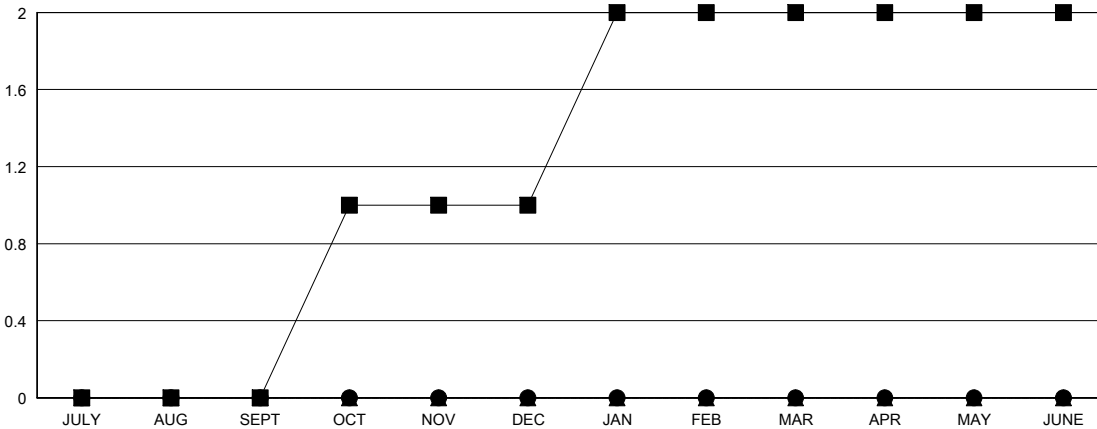
LOCATION SOUTH CAROLINA

GMT CA

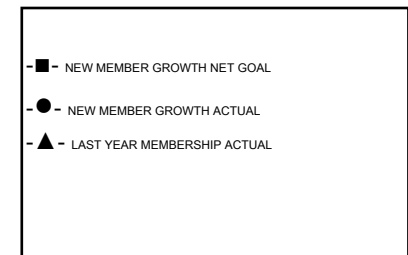
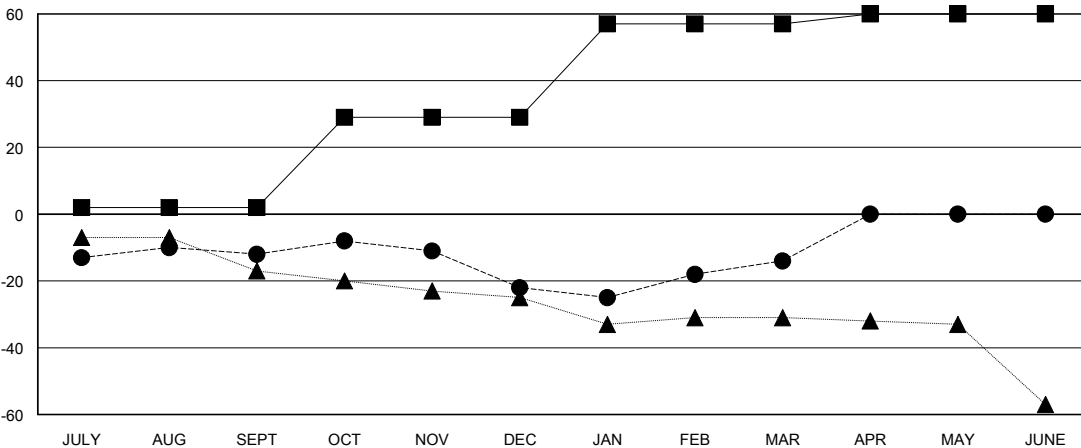
Clubs			
RESULTS FOR 2016-2017			
QUARTER	NEW CLUB GOAL	NEW CLUBS	DROPPED CLUBS
JULY/AUG/SEPT	0	0	1
OCT/NOV/DEC	1	0	0
JAN/FEB/MAR	1	0	0
APR/MAY/JUNE	0	0	0

Members			
RESULTS FOR 2016-2017			
QUARTER	NEW MEMBER GROWTH NET GOAL (not reinstated or transfers)	NEW MEMBER GROWTH ACTUAL (not reinstated or transfers)	DROPPED MEMBERS ACTUAL (including transfers)
JULY/AUG/SEPT	2	22	34
OCT/NOV/DEC	27	17	27
JAN/FEB/MAR	28	21	13
APR/MAY/JUNE	3	0	0

GOALS AND ACTUAL NEW CLUBS CUMULATIVE



GOALS AND ACTUAL MEMBERS CUMULATIVE



DROPPED CLUBS: 1	17 CLUBS OF 30 ADDED 1 OR MORE NEW MEMBERS	<b>GENDER DISTRIBUTION</b>
		MALE 516 (68.62%)
		FEMALE 236 (31.38%)
<b>DROPPED MEMBERS</b>	<a href="#">CLICK HERE FOR CUMULATIVE MEMBERSHIP DATA</a>	TOTAL FAMILY UNIT MEMBERS 149
DECEASED 10		FAMILY MEMBERS PAYING HALF DUES 76
CLUB CANCELLED 0		
OTHER 64		
<b>TOTAL 74</b>		